



# POMPE CENTRIFUGHE MONOBLOCCO


## CLOSE COUPLED CENTRIFUGAL PUMPS


SERIE CF



-  Pompe centrifughe monoblocco che trovano impiego in campo civile, agricolo e industriale: alimentazione di autoclavi, impianti di condizionamento, impianti anti-incendio, irrigazioni, ecc. Sono adatte al pompaggio di acqua pulita. Corpo pompa in ghisa. Girante in ottone nei modelli CF 32; girante in ghisa sugli altri modelli. Tenuta meccanica in ceramica/grafite. Motore chiuso autoventilato. Albero in acciaio inox AISI 304. Tensione trifase 230-400V / 50Hz sui modelli fino a 5,5 HP; tensione trifase 400-690V / 50Hz per potenze superiori. Protezione a cura dell'utente. Protezione IP 55. Isolamento classe F. Temperatura massima dell'acqua da pompare 70 °C.

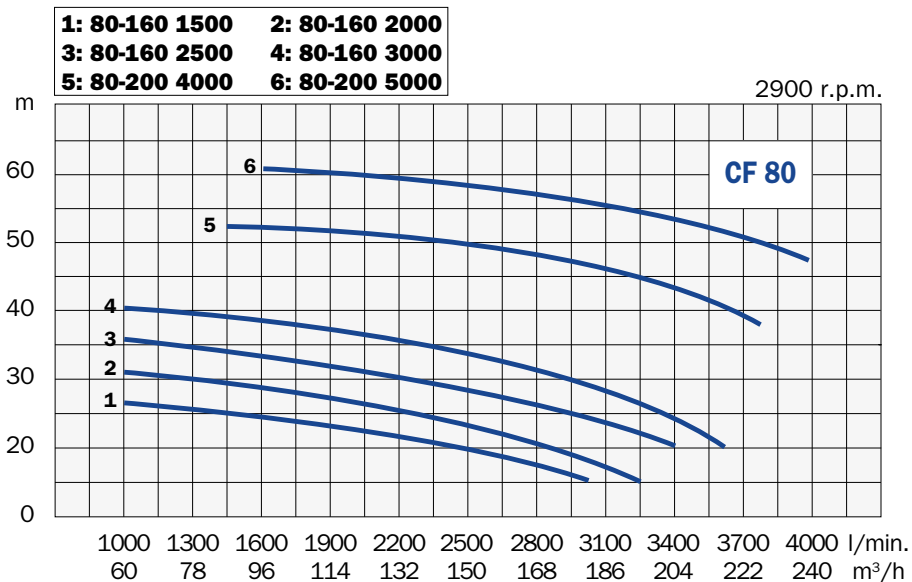
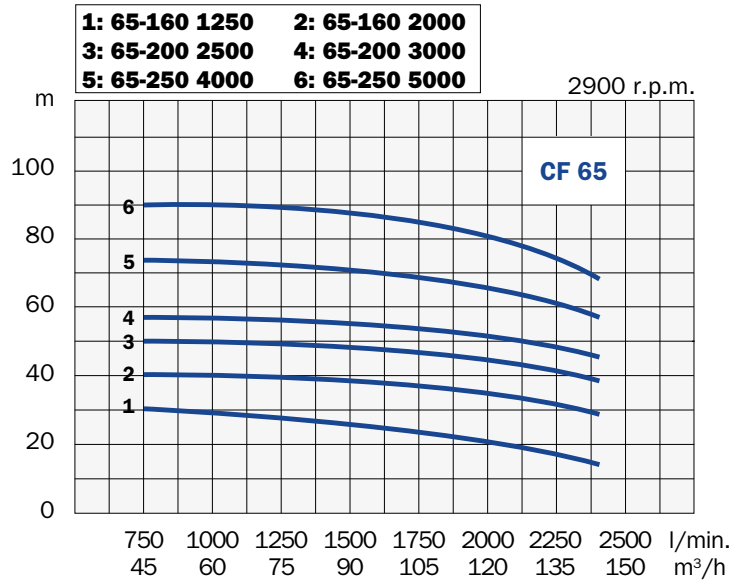
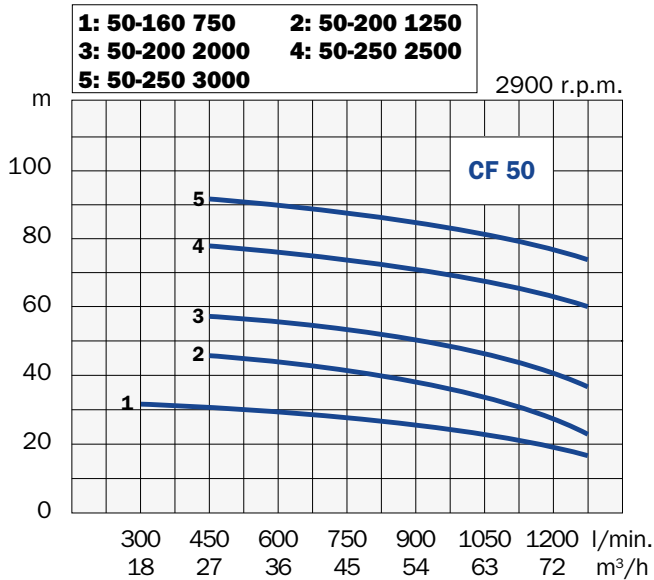
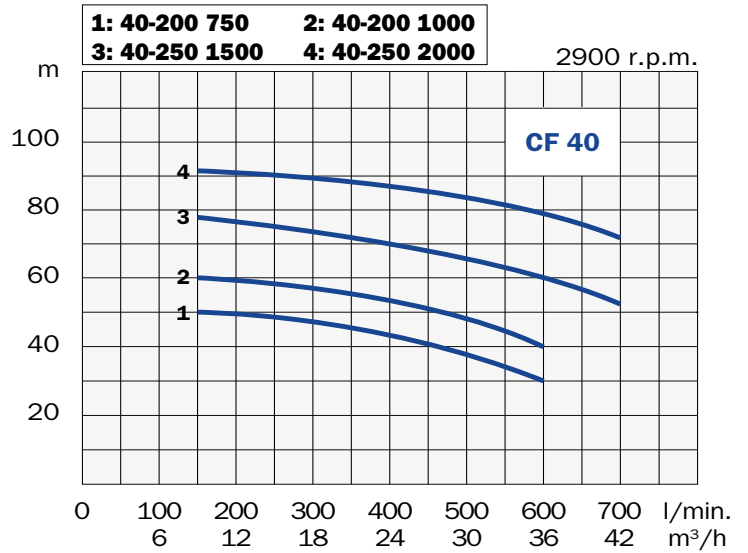
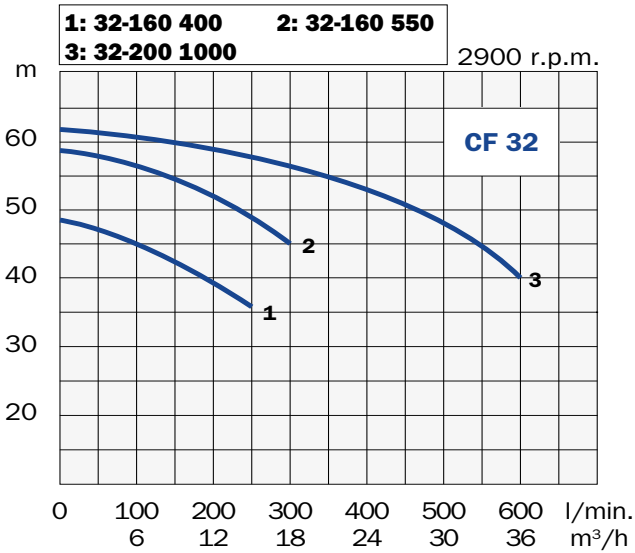
-  Close coupled single-stage centrifugal pumps suitable for pumping clean water. They are used in civil, industrial and agricultural plants: water supply, irrigations, feeding of steam boilers, heating and conditioning plants, fire-fighting plants, etc. Pump body in cast iron. Impeller in brass on models CF 32; in cast iron on other models. Mechanical seal in ceramic/carbon. Closed self-ventilated motor. Shaft in stainless steel AISI 304. Three-phase voltage 230-400V / 50Hz on models up to 4 kW; three-phase voltage 400-690V / 50Hz on other models. The three-phase pumps must be protected by a fused remote isolator switch. Protection class IP 55. Insulation class F. Max. temperature of pumped water 158 °F (70 °C).

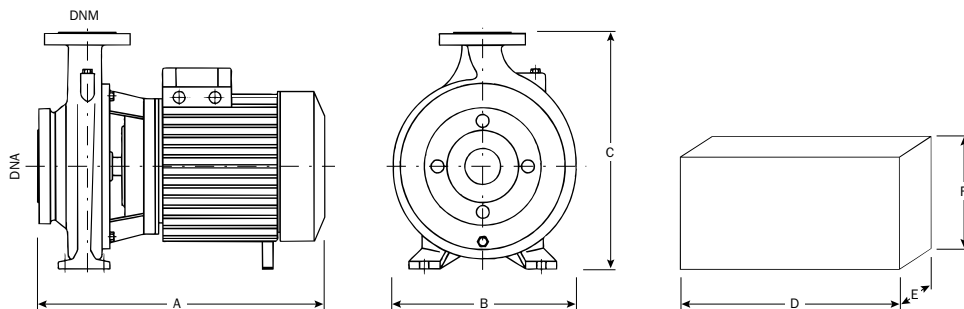
-  Pompes centrifuges monobloc indiquées pour plusieurs emplois dans les installations domestiques, industrielles et agricoles: approvisionnement d'eau, irrigations, groupes surpresseurs, conditionnement thermique, etc. Elles sont indiquées pour le pompage d'eau propre. Corps de pompe en fonte. Roue en laiton sur les modèles CF 32; roue en fonte sur les autres modèles. Garniture mécanique en céramique/graphite. Moteur enfermé avec ventilation extérieure. Arbre en acier inox AISI 304. Bobinage triphasé 230-400V / 50Hz sur les modèles jusqu'à 5,5 CV; bobinage triphasé 400-690V / 50Hz sur les autres modèles. Protection par l'utilisateur. Protection IP 55. Isolation classe F. Température max. de l'eau pompée 70 °C.

-  Kreiselpumpen in Blockbauweise. Ideal für verschiedene Anforderungen im Haushalt, in der Landwirtschaft oder in der Industrie zur Wasserversorgung, zur Bewässerung usw. Diese Pumpen sind nur für sauberes Wasser geeignet. Pumpengehäuse aus Grauguß. Laufrad aus Messing bei den Modellen CF 32; Laufrad aus Grauguß bei allen anderen Modellen. Gleitringdichtung aus Keramik/Graphit. Antriebswelle aus rostfreiem Stahl. Dreiphasenspannung 230-400V / 50Hz bei den Modellen bis zu 4kW; Dreiphasenspannung 400-690V / 50Hz bei allen anderen Modellen. Motorvollschutz nach Benutzersorge. IP 55 Schutz. Isol. Klasse F. Max. Temperatur der Flüssigkeit: 70 °C.

Modello Model Modèle Modell	Potenza Power Puissance Pferdestärke		Tensione Voltage Bobinage Spannung	A	Prevalenza - Head - Hauteur - Förderhöhe (m)							
	HP	kW	V		Portata - Capacity - Débit - Fördermenge (m <sup>3</sup> /h)							
<b>CF 32</b>					<b>0</b>	<b>6</b>	<b>9</b>	<b>12</b>	<b>18</b>	<b>24</b>	<b>30</b>	<b>36</b>
<b>CF 32-160 400</b>	4	3	230-400/50/3	11,6-6,8	48	45	42	39				
<b>CF 32-160 550</b>	5.5	4	230-400/50/3	16,0-9,2	58	57	55	52	45			
<b>CF 32-200 1000</b>	10	7.5	400-690/50/3	16,0-9,5	62	61	60	58	57	53	48	40
<b>CF 40</b>					<b>0</b>	<b>6</b>	<b>12</b>	<b>18</b>	<b>24</b>	<b>30</b>	<b>36</b>	<b>42</b>
<b>CF 40-200 750</b>	7.5	5.5	400-690/50/3	14,0-8,0	50	49	49	47	43	37	30	
<b>CF 40-200 1000</b>	10	7.5	400-690/50/3	16,0-9,5	61	60	59	57	53	48	40	
<b>CF 40-250 1500</b>	15	11	400-690/50/3	25,0-14,4	79	78	77	73	70	66	60	52
<b>CF 40-250 2000</b>	20	15	400-690/50/3	32,0-18,5	92	91	91	90	87	83	79	72
<b>CF 50</b>					<b>0</b>	<b>18</b>	<b>27</b>	<b>36</b>	<b>45</b>	<b>54</b>	<b>63</b>	<b>72</b>
<b>CF 50-160 750</b>	7.5	5.5	400-690/50/3	14,0-8,0	33	32	31	29	28	25	23	19
<b>CF 50-200 1250</b>	12.5	9.5	400-690/50/3	19,5-11,5	48		46	44	41	38	34	27
<b>CF 50-200 2000</b>	20	15	400-690/50/3	32,0-18,5	58		57	56	53	50	46	40
<b>CF 50-250 2500</b>	25	18.5	400-690/50/3	41,5-24,0	80		79	76	73	71	68	63
<b>CF 50-250 3000</b>	30	22	400-690/50/3	49,0-28,0	92		91	90	87	85	81	77
<b>CF 65</b>					<b>0</b>	<b>45</b>	<b>60</b>	<b>75</b>	<b>90</b>	<b>105</b>	<b>120</b>	<b>135</b>
<b>CF 65-160 1250</b>	12.5	9.5	400-690/50/3	19,5-11,5	32	31	29	28	26	23	21	17
<b>CF 65-160 2000</b>	20	15	400-690/50/3	32,0-18,5	41	40	40	39	38	37	35	32
<b>CF 65-200 2500</b>	25	18.5	400-690/50/3	41,5-24,0	51	50	50	49	48	47	44	42
<b>CF 65-200 3000</b>	30	22	400-690/50/3	49,0-28,0	59	58	58	57	55	53	52	48
<b>CF 65-250 4000</b>	40	30	400-690/50/3	63,5-35,0	74	73	73	72	71	69	65	61
<b>CF 65-250 5000</b>	50	37	400-690/50/3	74,5-44,0	91	90	90	89	88	85	81	74
<b>CF 80</b>					<b>0</b>	<b>60</b>	<b>78</b>	<b>96</b>	<b>132</b>	<b>168</b>	<b>204</b>	<b>240</b>
<b>CF 80-160 1500</b>	15	11	400-690/50/3	25,0-14,4	27	26	25	24	22	18		
<b>CF 80-160 2000</b>	20	15	400-690/50/3	32,0-18,5	32	31	29	28	25	21		
<b>CF 80-160 2500</b>	25	18.5	400-690/50/3	41,5-24,0	37	36	34	33	30	27	20	
<b>CF 80-160 3000</b>	30	22	400-690/50/3	49,0-28,0	41	40	39	38	35	32	24	
<b>CF 80-200 4000</b>	40	30	400-690/50/3	63,5-36,0	53			52	51	48	43	
<b>CF 80-200 5000</b>	50	37	400-690/50/3	74,5-44,0	62			61	59	57	53	47

\*On request other voltages are available





Modello Model Modèle Modell	Aspirazione Suction Aspiration Saug-Seite	Mandata Discharge Refoulement Druck-Seite	Dimensioni - Dimensions - Masstabelle mm						Peso Weight Poids Gewicht kg
			A	B	C	D	E	F	
<b>CF 32</b>									
<b>CF 32-160 400</b>	2" - DN50	1"1/4 - DN32	450	261	340	540	290	360	44
<b>CF 32-160 550</b>	2" - DN50	1"1/4 - DN32	450	261	340	540	290	360	46
<b>CF 32-200 1000</b>	2" - DN50	1"1/4 - DN32	541	268	340	660	350	600	72
<b>CF 40</b>									
<b>CF 40-200 750</b>	2"1/2 - DN65	1"1/2 - DN40	560	275	340	660	350	600	70
<b>CF 40-200 1000</b>	2"1/2 - DN65	1"1/2 - DN40	560	275	340	660	350	600	75
<b>CF 40-250 1500</b>	2"1/2 - DN65	1"1/2 - DN40	600	310	405	660	350	600	94
<b>CF 40-250 2000</b>	2"1/2 - DN65	1"1/2 - DN40	600	310	405	660	350	600	98
<b>CF 50</b>									
<b>CF 50-160 750</b>	2"1/2 - DN65	2" - DN50	560	256	340	660	350	530	68
<b>CF 50-200 1250</b>	2"1/2 - DN65	2" - DN50	565	287	360	660	350	530	83
<b>CF 50-200 2000</b>	2"1/2 - DN65	2" - DN50	605	287	360	660	350	530	95
<b>CF 50-250 2500</b>	2"1/2 - DN65	2" - DN50	725	332	405	810	360	530	135
<b>CF 50-250 3000</b>	2"1/2 - DN65	2" - DN50	725	332	405	810	360	530	145
<b>CF 65</b>									
<b>CF 65-160 1250</b>	3" - DN80	2"1/2 - DN65	565	269	360	660	350	530	82
<b>CF 65-160 2000</b>	3" - DN80	2"1/2 - DN65	565	269	360	660	350	530	97
<b>CF 65-200 2500</b>	3" - DN80	2"1/2 - DN65	725	330	405	810	360	530	135
<b>CF 65-200 3000</b>	3" - DN80	2"1/2 - DN65	725	330	405	810	360	530	145
<b>CF 65-250 4000</b>	3" - DN80	2"1/2 - DN65	776	360	455	820	400	600	245
<b>CF 65-250 5000</b>	3" - DN80	2"1/2 - DN65	788	360	455	820	400	600	285
<b>CF 80</b>									
<b>CF 80-160 1500</b>	4" - DN100	3" - DN80	635	328	405	660	350	530	97
<b>CF 80-160 2000</b>	4" - DN100	3" - DN80	635	328	405	660	350	530	117
<b>CF 80-160 2500</b>	4" - DN100	3" - DN80	755	330	405	810	360	530	140
<b>CF 80-160 3000</b>	4" - DN100	3" - DN80	755	330	405	810	360	530	150
<b>CF 80-200 4000</b>	4" - DN100	3" - DN80	840	355	405	850	380	530	233
<b>CF 80-200 5000</b>	4" - DN100	3" - DN80	840	355	405	850	380	530	247